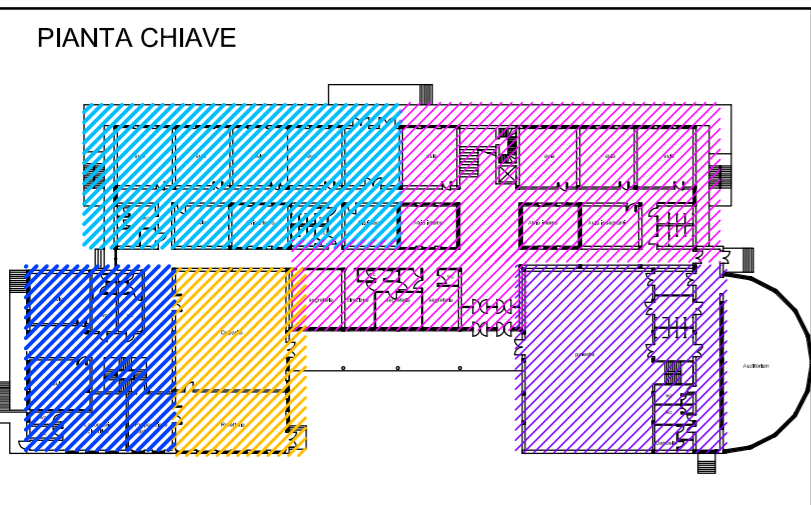
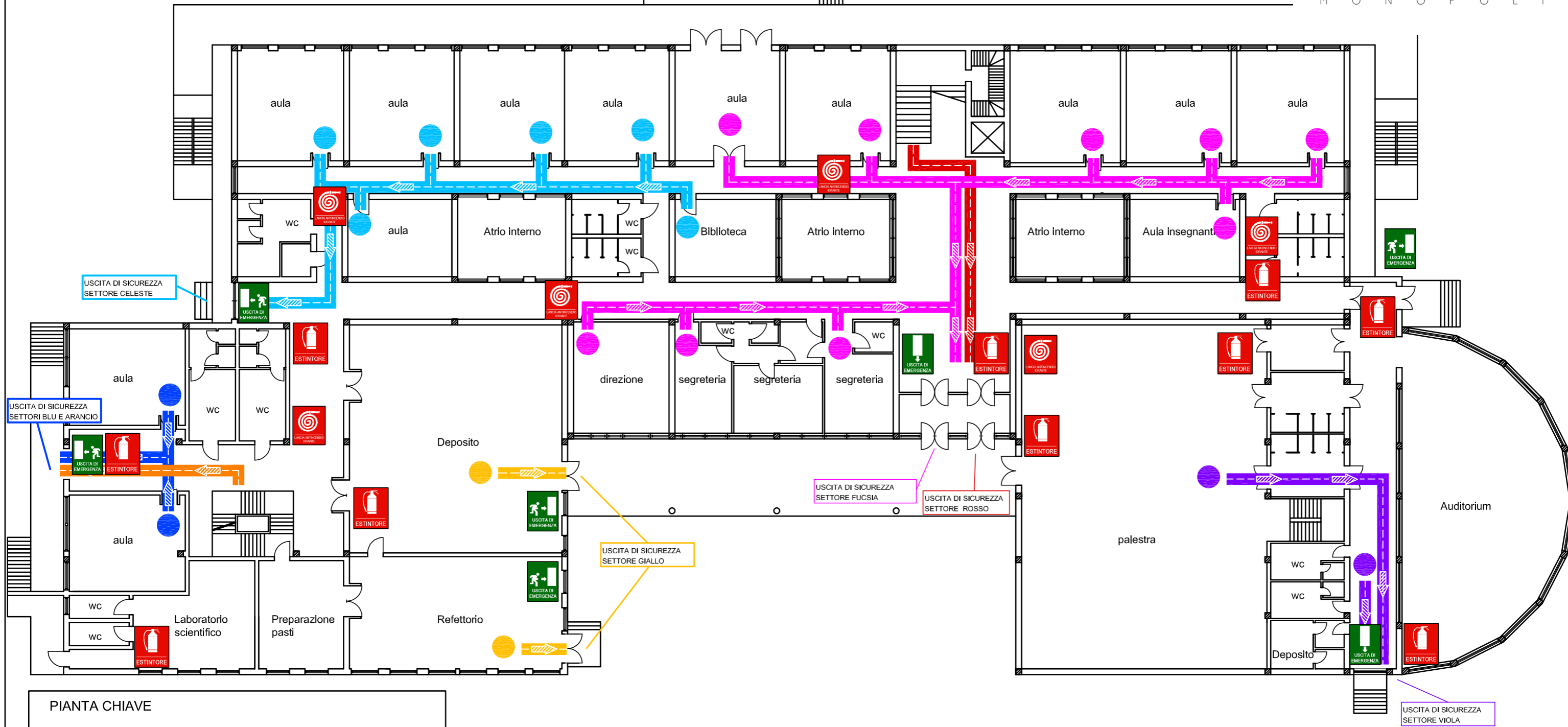


# SCUOLA PRIMARIA "CAROLINA BREGANTE" PIANO DI EVACUAZIONE ED EMERGENZA

Pianta piano terra



I.C. 4° C.D. BREGANTE - S.M. VOLTA  
M O N O P O L I



**STUDIO DI INGEGNERIA**  
**ING. Rosanna CISTERNINO**  
**ING. Giuseppe CISTERNINO**  
**ING. Michele CARRIERI**  
 Via F. Angiulli, 24  
 70013 Castellana Grotte (BA)  
 Tel-Fax 080.4961269  
 E-mail studiodingegneria@libero.it

